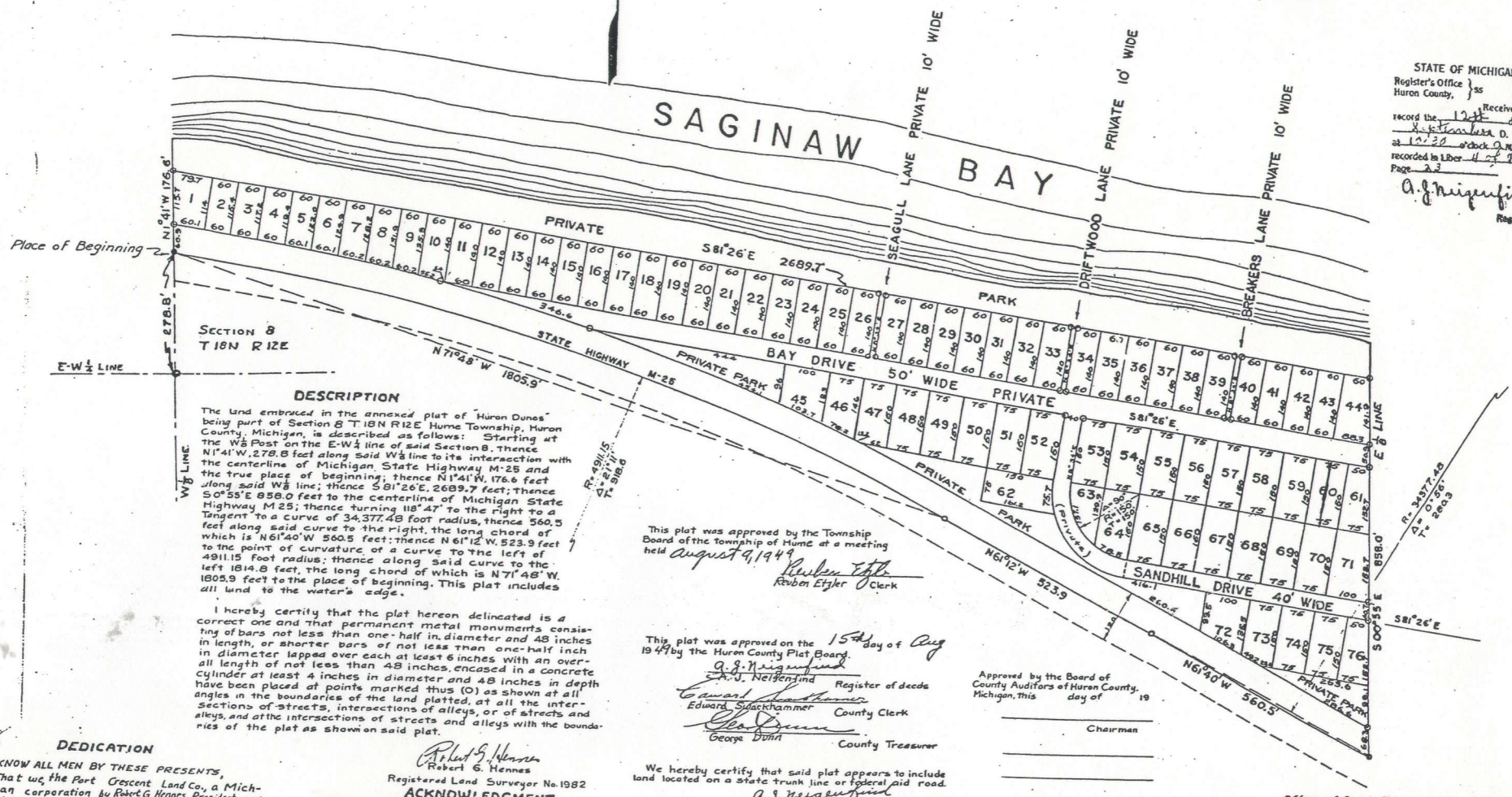


23

Restrictions Recorded in 204 Deeds, page 228.  
A. J. Neigenfund - Register

BEING PART OF SECTION 8, T18N, R12E, HURON TOWNSHIP  
HURON COUNTY, MICHIGAN  
SCALE 1" = 150'  
ALL DIMENSIONS ARE GIVEN IN FEET AND DECIMALS THEREOF

STATE OF MICHIGAN  
Register's Office }  
Huron County, }  
Received for record the 12th day of August 1949 at 12:30 o'clock P.M. and recorded in Liber 4 of State Page 23  
A. J. Neigenfund  
Register



**DESCRIPTION**  
The land embraced in the annexed plat of "Huron Dunes" being part of Section 8 T18N R12E Hume Township, Huron County, Michigan, is described as follows: Starting at the W 1/4 Post on the E-W 1/4 line of said Section 8, thence N74°1'W, 278.8 feet along said W 1/4 line to its intersection with the centerline of Michigan State Highway M-25 and the true place of beginning; thence N74°1'W, 176.6 feet along said W 1/4 line; thence S81°26'E, 2689.7 feet; thence S0°55'E 858.0 feet to the centerline of Michigan State Highway M-25; thence turning 118°47' to the right to a tangent to a curve of 34,377.48 foot radius, thence 560.5 feet along said curve to the right; thence the long chord of which is N61°40'W 560.5 feet; thence N61°12'W 523.9 feet to the point of curvature of a curve to the left of 4911.15 foot radius; thence along said curve to the left 1814.8 feet; thence the long chord of which is N71°48'W, 1805.9 feet to the place of beginning. This plat includes all land to the water's edge.

I hereby certify that the plat hereon delineated is a correct one and that permanent metal monuments consisting of bars not less than one-half inch diameter and 48 inches in length, or shorter bars of not less than one-half inch diameter lapped over each at least 6 inches with an overall length of not less than 48 inches, encased in a concrete cylinder at least 4 inches in diameter and 48 inches in depth have been placed at points marked thus (O) as shown at all angles in the boundaries of the land platted, at all the intersections of streets, intersections of alleys, or of streets and alleys, and at the intersections of streets and alleys with the boundaries of the plat as shown said plat.

This plat was approved by the Township Board of the Township of Hume at a meeting held August 9, 1949  
Ruben Epler  
Ruben Epler Clerk

This plat was approved on the 15th day of August 1949 by the Huron County Plat Board.  
A. J. Neigenfund  
A. J. Neigenfund Register of deeds  
Edward Swackhammer  
Edward Swackhammer County Clerk  
George Dunn  
George Dunn County Treasurer

Approved by the Board of County Auditors of Huron County, Michigan, this \_\_\_\_\_ day of \_\_\_\_\_  
Chairman

We hereby certify that said plat appears to include land located on a state trunk line or federal aid road.  
A. J. Neigenfund  
A. J. Neigenfund  
Edward Swackhammer  
George Dunn  
County Plat Board

This plat has been examined and approved on the 6th day of August 1949 by the Huron County Board of Road Commissioners.  
Edward D. Schock  
Edward D. Schock Chairman  
Charles McCardle  
Charles McCardle Member

An easement is hereby dedicated for public utility purposes along the southerly boundaries of Lots 1 to 61 and 72 to 76, along the easterly boundaries of Lots 44, 61, 71 and 76, along the northerly boundaries of Lots 62 to 71, and along the westerly boundaries of Lots 63 and 65, in a width reasonably necessary for the construction, operation and maintenance of all necessary equipment, including poles, lines, conduits and all appurtenances thereto, and also including the right to trim or cut down trees which would interfere in any way with the purposes for which this easement is dedicated.  
Office of County Treasurer, Huron County  
I hereby certify that there are 76 tax liens or titles held by the State on the lands described hereon, and that there are 76 tax liens or titles held by individuals on said lands, for five years preceding the 15th day of August 1949 and that the taxes for said period of five years are paid, as shown by the records of this office. This certificate does not apply to taxes, if any, now in the process of collection by township, city or village collection officers.  
George Dunn, County Treasurer

**DEDICATION**  
KNOW ALL MEN BY THESE PRESENTS, That we, the Port Crescent Land Co., a Michigan corporation by Robert G. Hennes, President, and Miles F. McKee, Secretary, as proprietor, have caused the land embraced in the annexed plat to be surveyed, laid out and platted to be known as Huron Dunes, being part of Section 8, T18N, R12E, Hume Township, Huron County, Michigan, and that the streets lanes and parts as shown on said plat are hereby dedicated to the use of the property owners, with the exception of that land which is part of Michigan State Highway M-25, which is dedicated to the use of the public.  
Signed and Sealed in the Presence of  
Part-Crescent Land Co.  
Harold M. Tolson  
Harold M. Tolson (L.S.)  
Robert G. Hennes, President  
Miles F. McKee, Secretary  
Francis C. Billingsley

**ACKNOWLEDGMENT**  
STATE OF MICHIGAN } ss.  
County of Wayne }  
On this 3rd day of August 1949 before me, a Notary Public in and for said county, appeared Robert G. Hennes and Miles F. McKee, to me personally known, who being each by me duly sworn did say that they are the President and Secretary respectively of the Port Crescent Land Co., a Michigan corporation, and seal of said corporation and that said instrument was signed and sealed in behalf of said corporation by authority of its Board of Directors and the said Robert G. Hennes and Miles F. McKee acknowledged said instrument to be the free act and deed of said corporation.  
Sue M. Smith  
Sue M. Smith Notary Public, Wayne Co.  
My commission expires Feb. 26, 1950

APPROVED  
Charles McCardle  
CHARLES M. McCARDLE